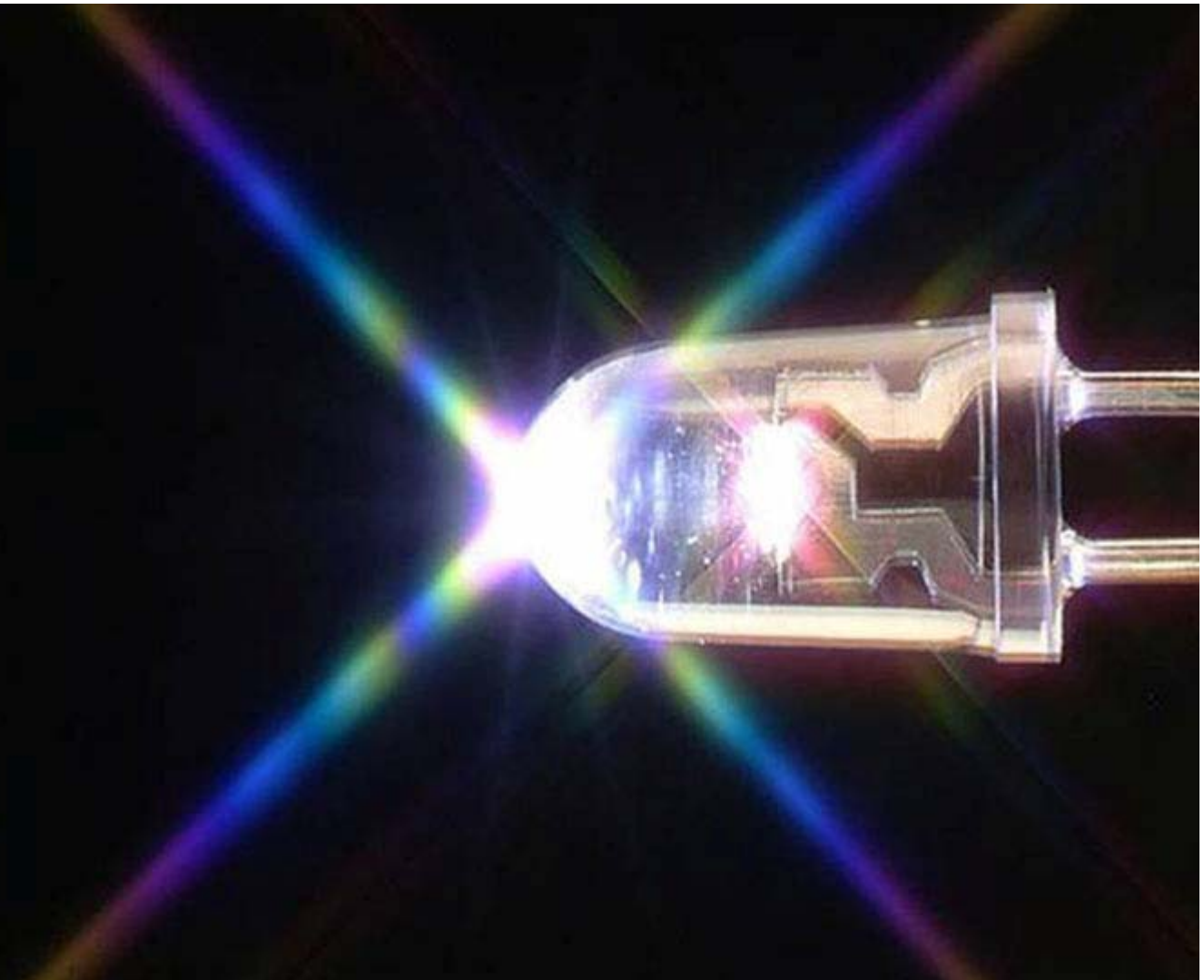


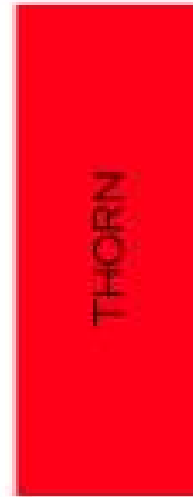
LED Applications

Joachim Geiginger

Ledon Lighting GmbH



zumtobel group



TridonicAtco Division

Zumtobel Lighting Division

TOYODA GOSEI

LEXEDIS

LEON

Zumtobel Group

LED Technology in the Group

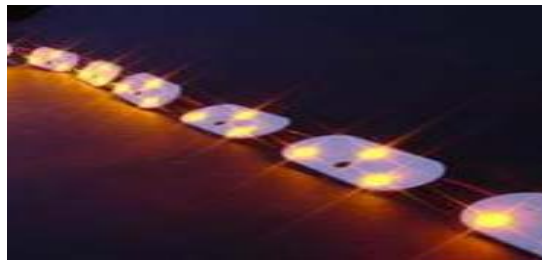
LEXEDIS

Development, Production and
Selling of LED Lightsources



TRIDONIC.ATCO

Development, Production and
Selling of LED Components



LEDON

Development, Production and
Selling of LED Luminaires and
LED-Lighting Solutions



LED-Technology

Multiple Advantages

ALL IN ONE

- White Light
- Coloured Light
- Colour Changes

Gentle

- no UV
- no IR

STRONG

- Lifetime up to 50.000 Hours
- Robust
- High functional Safety
- Low Maintenance
- Energy efficient



FLEXIBEL

- Variable Color Temperature
2.700 up to 6.500 Kelvin
- Dimmable 0 - 100%

FLAT

- Low Installation Depth
- Small Design
- Design Freedom

COOL

- No uncontrolled Heat
- Integration in
various Materials
- Touchable and adjustable

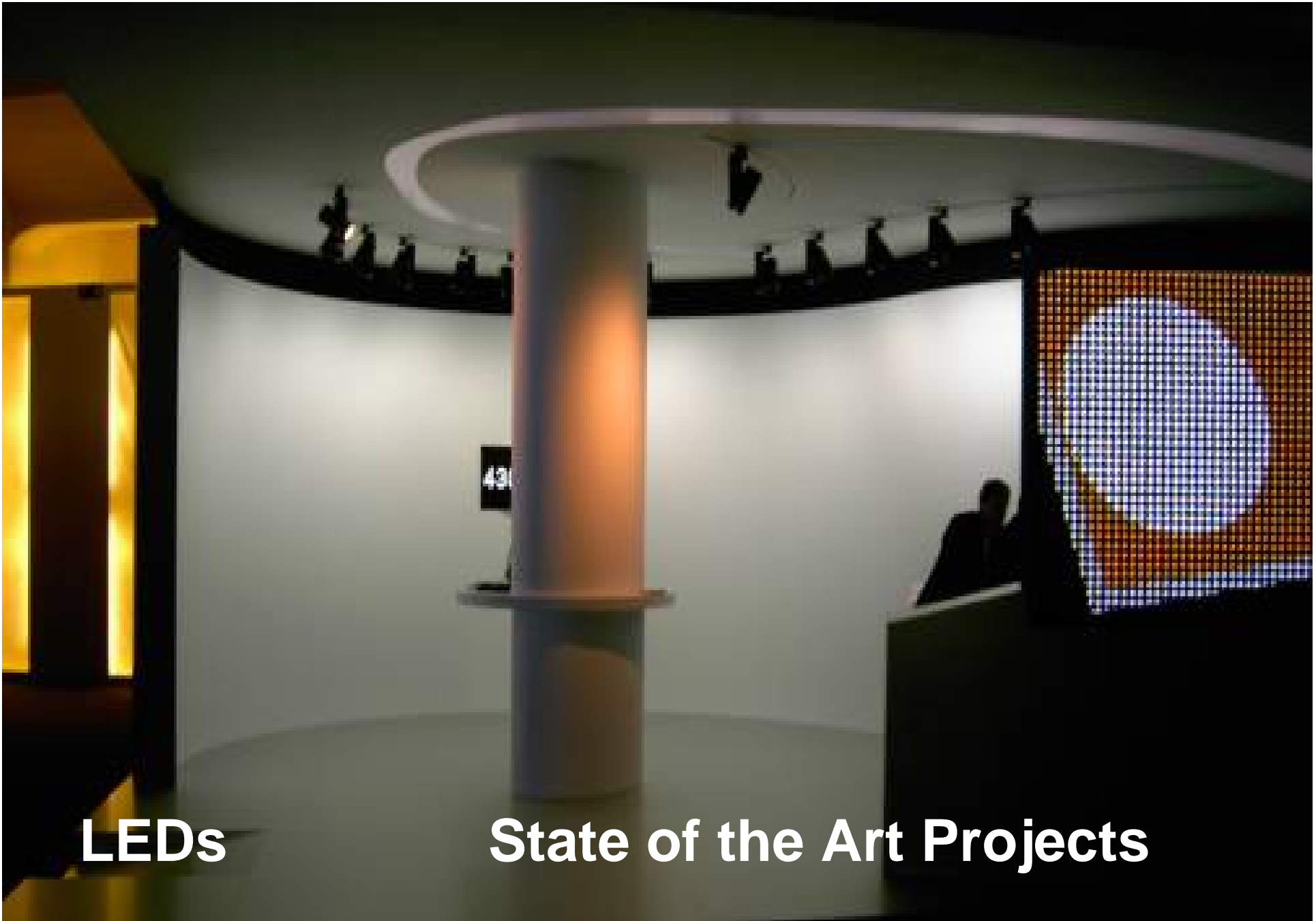
LED Technology

TEMPURA Spot Light, Zumtobel



TEMPURA

- Design EOOS
- 1000lm luminous flux
- Adjustable color temperature from 2.500K up to 6.500K
- dimmable
- „cold light“
- Free of IR and free of UV (Museum, Shop !!)
- Light distribution: spot, flood, wide flood
- intelligent controls via DALI or DMX512
- Standalone Version (push buttons)
- 50.000h operating hours without reduction of the light performance
- ca. 45W power consumption

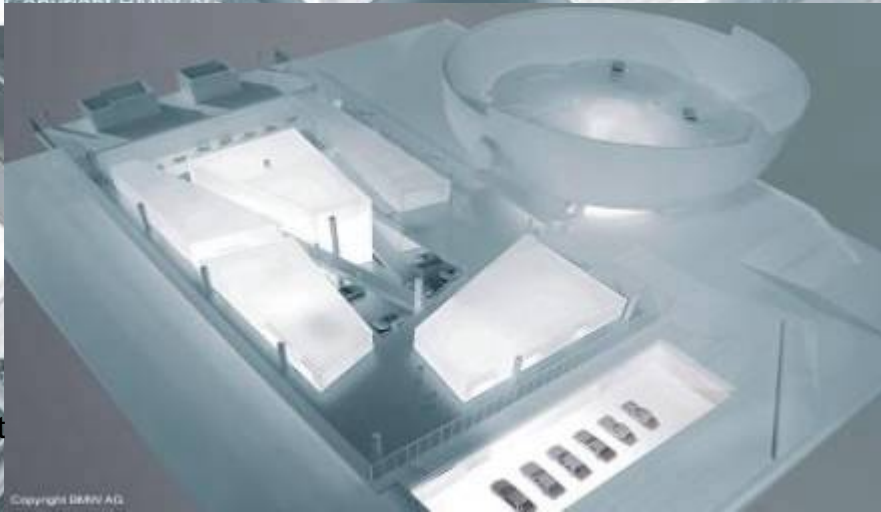
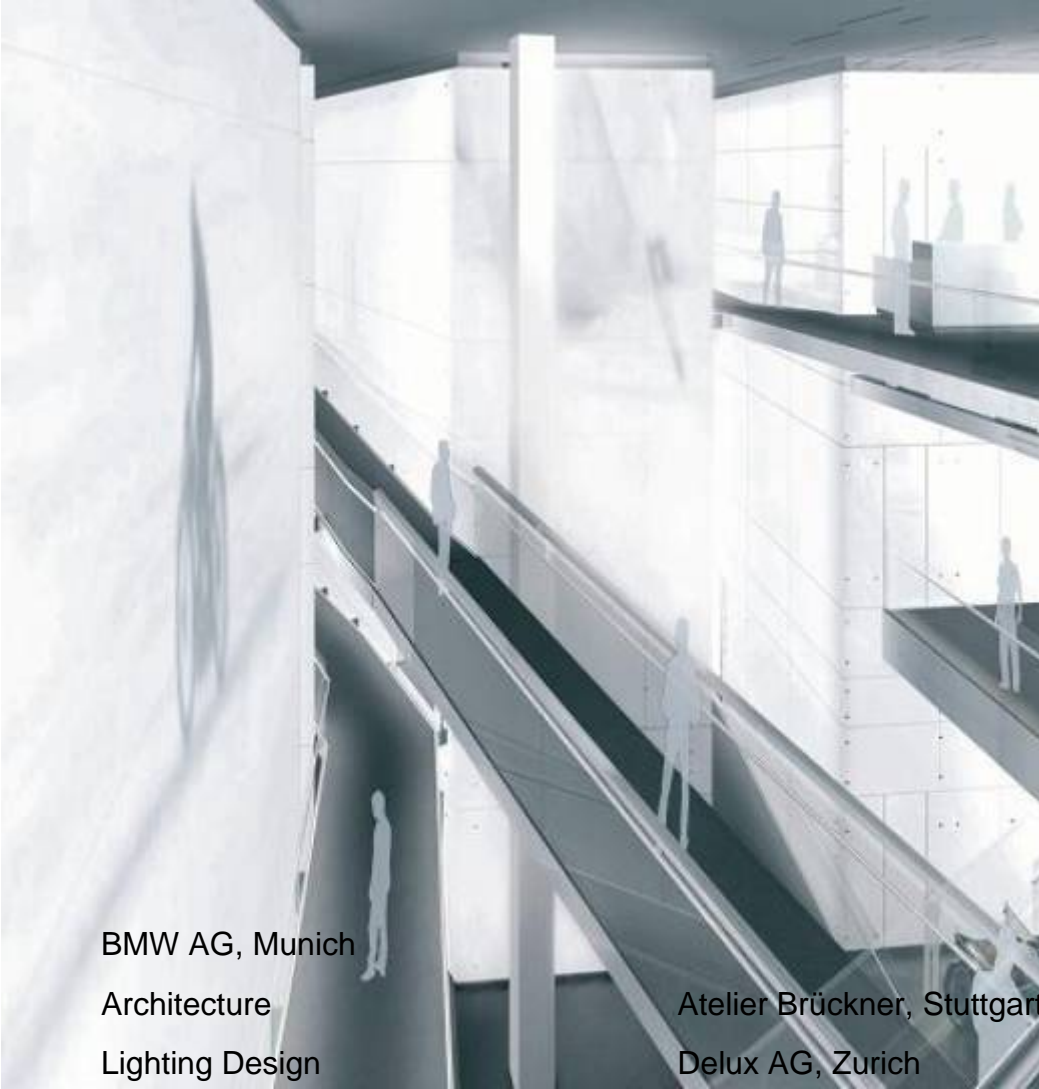


LEDs

State of the Art Projects

BMW Museum, Munich

Glass Facade - Backlighting



BMW AG, Munich
Architecture
Lighting Design

Atelier Brückner, Stuttgart
Delux AG, Zurich

BMW Museum, Munich

Glass Facade - Backlighting

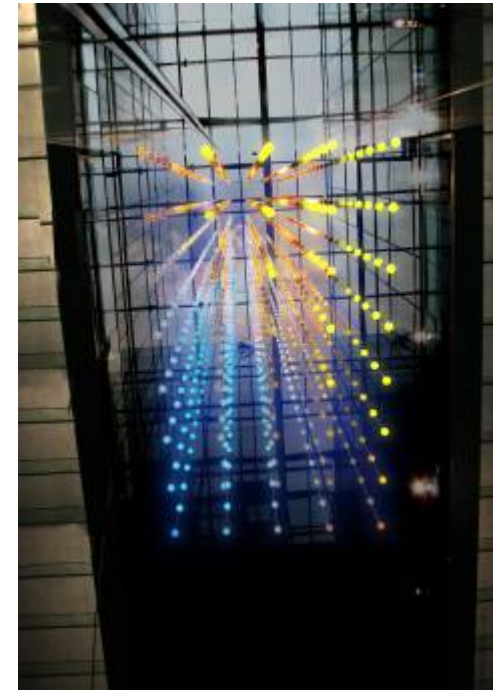
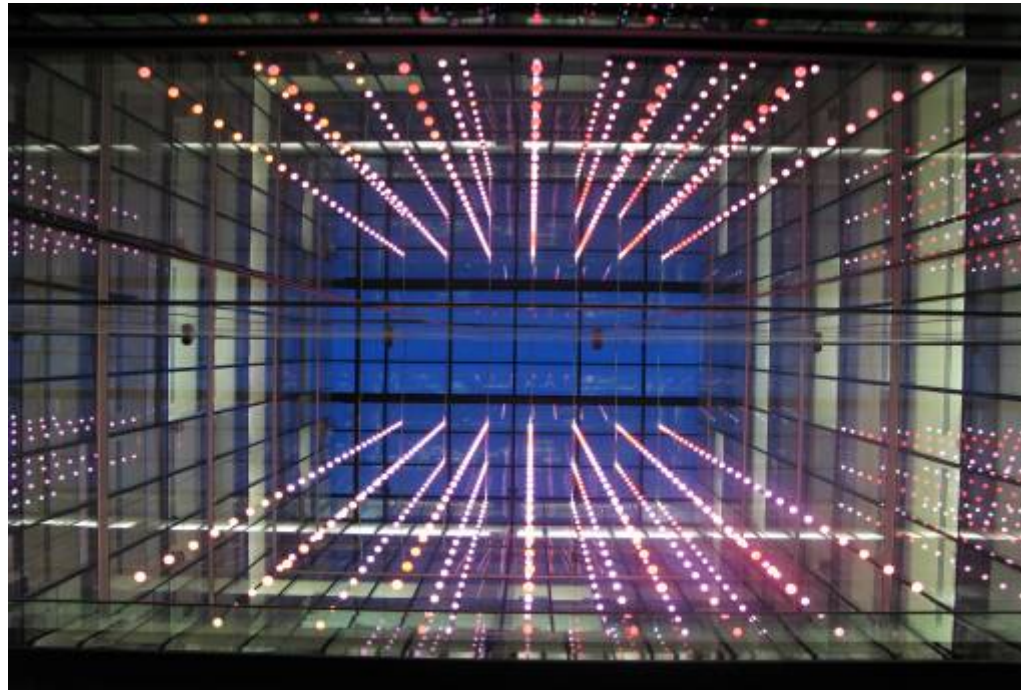


Copyright BMW AG

Pixel Cloud, London

Color Dynamics

Three-dimensional Matrix of 624 Spheres, each equipped with 24 LEDs



Atrium Allen & Overy, Bishops Square, London

Architecture

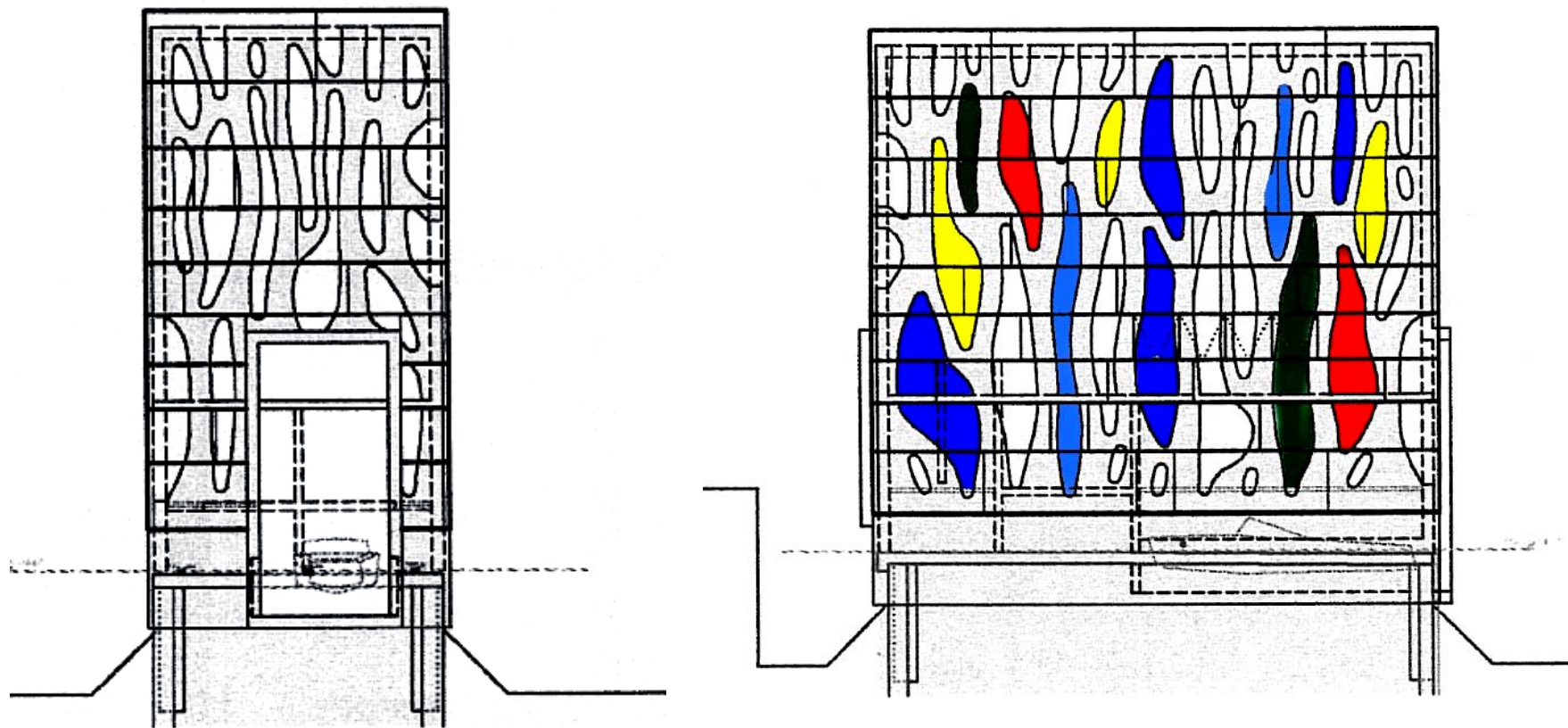
Foster and Partners

LED Concept and Design

Jason Bruges Studio, London

Boathouse / Club Rohner

Facade Architecture



Architecture

Eberle & Baumschlager, Austria

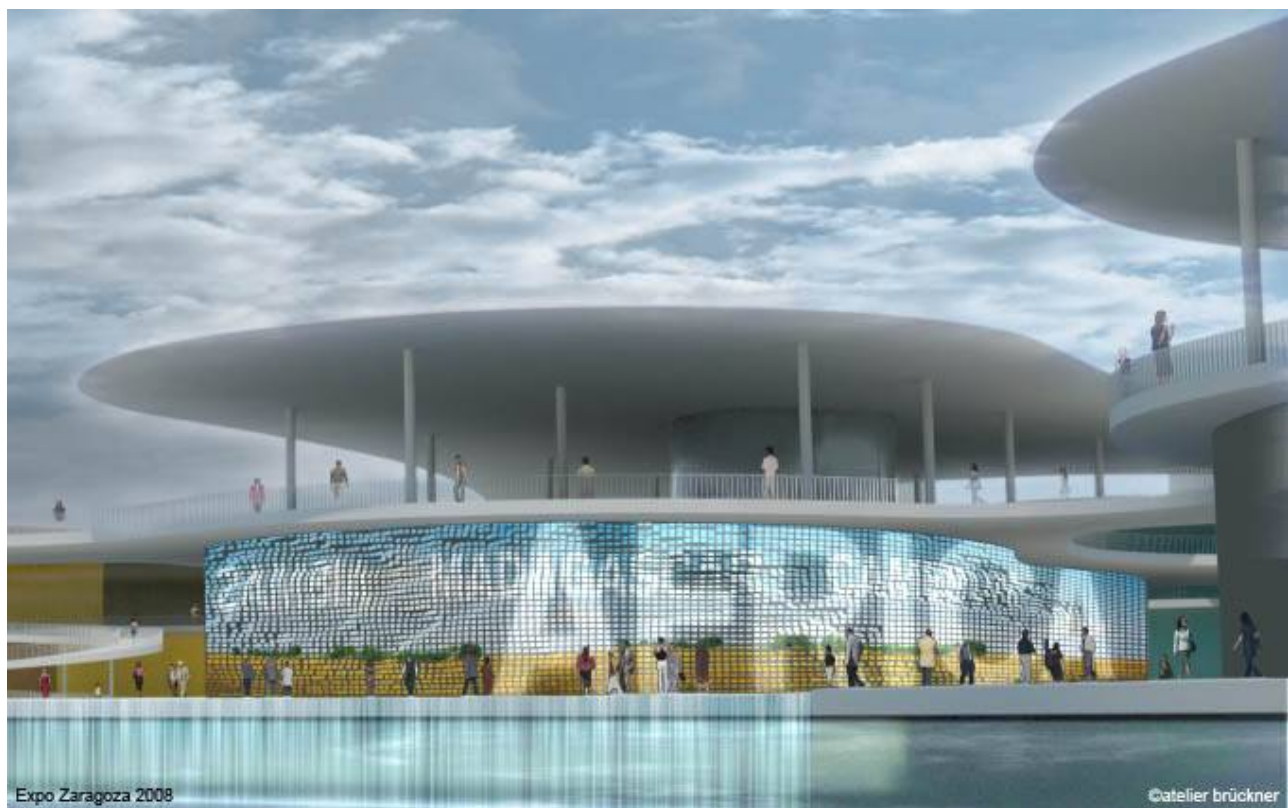
Boathouse / Club Rohner

Facade Architecture



EXPO 2008, Zaragoza

Media Facade



Africa Pavillon

Concept and Design

Architecture

Nüssli AG, Suisse

Atelier Brückner, Stuttgart

Stadion Center, Vienna

The new Experience of Shopping



IG Immobilien Vienna

Planning

LED Concept and Design

Loistl & Loistl, Projectconsult GmbH

Dr. Christian Mikunda and Make It Real, Jürgen Hassler, Hamburg

Stadion Center, Vienna

Contour and Cove Lighting, Power Flood Lighting



Stadion Center, Vienna

Media Ceiling



LED Technology Summary

Effects



Emotion



Function



Cost Saving





**Many Thanks
for Your Attention**